



MONTHLY MEMBERSHIP PROGRESS REPORT

District 11 D2

Results as of: 5/31/2017

GMT: THOMAS MATNEY

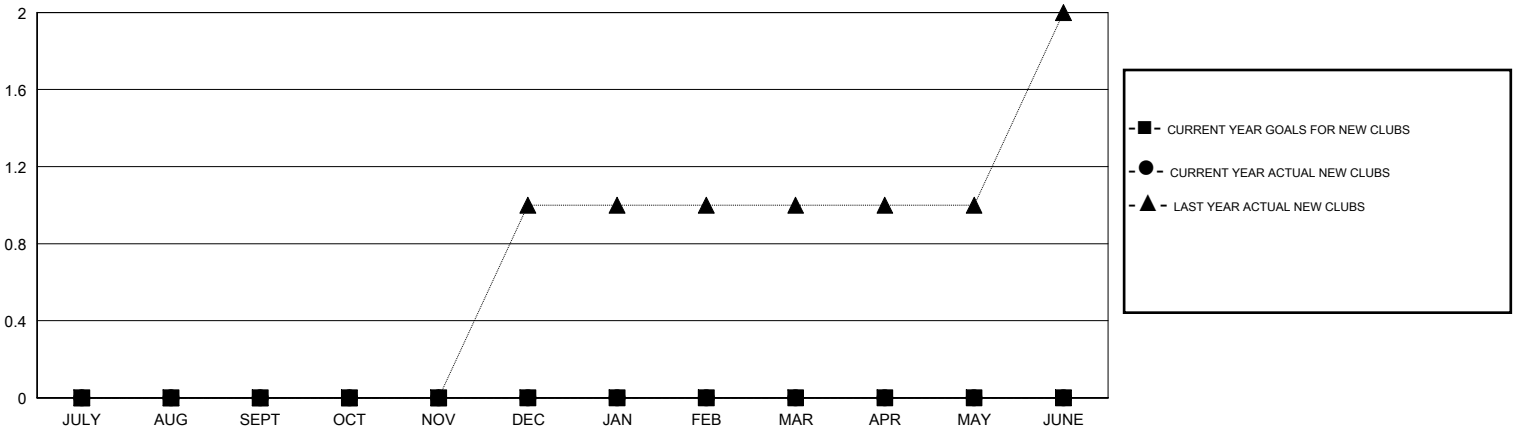
LOCATION MICHIGAN

GMT CA

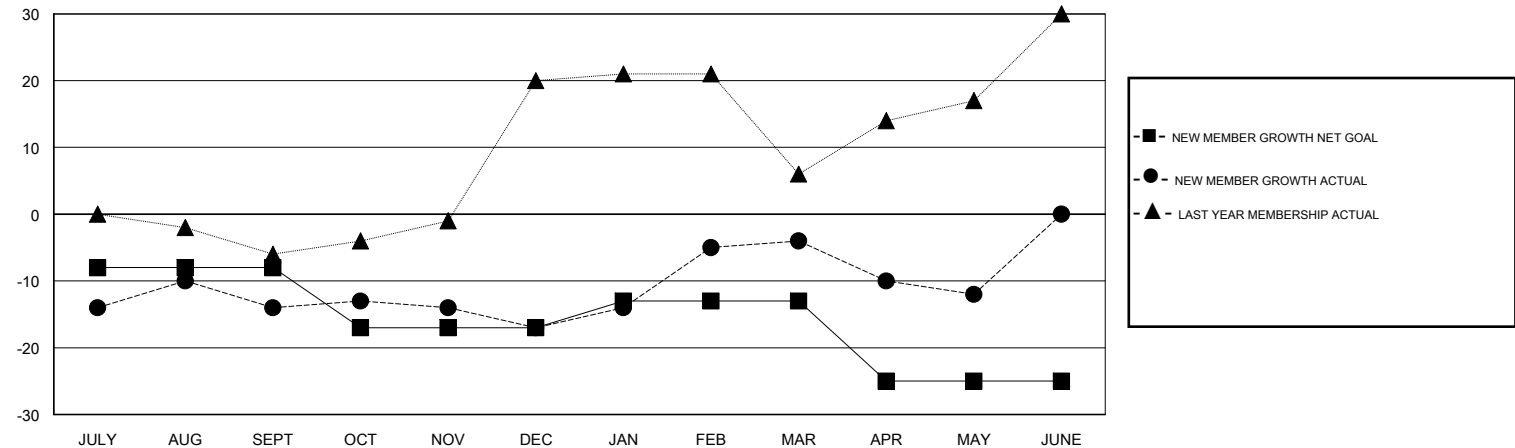
Clubs			
RESULTS FOR 2016-2017			
QUARTER	NEW CLUB GOAL	NEW CLUBS	DROPPED CLUBS
JULY/AUG/SEPT	0	0	0
OCT/NOV/DEC	0	0	0
JAN/FEB/MAR	0	0	0
APR/MAY/JUNE	0	0	0

Members			
RESULTS FOR 2016-2017			
QUARTER	NEW MEMBER GROWTH NET GOAL (not reinstated or transfers)	NEW MEMBER GROWTH ACTUAL (not reinstated or transfers)	DROPPED MEMBERS ACTUAL (including transfers)
JULY/AUG/SEPT	-8	23	37
OCT/NOV/DEC	-9	48	51
JAN/FEB/MAR	4	38	25
APR/MAY/JUNE	-12	21	29

GOALS AND ACTUAL NEW CLUBS CUMULATIVE



GOALS AND ACTUAL MEMBERS CUMULATIVE



DROPPED CLUBS: 0	34 CLUBS OF 46 ADDED 1 OR MORE NEW MEMBERS	<u>GENDER DISTRIBUTION</u>
DROPPED MEMBERS	CLICK HERE FOR CUMULATIVE MEMBERSHIP DATA	MALE 991 (77.85%)
DECEASED 25		FEMALE 282 (22.15%)
CLUB CANCELLED 0		TOTAL FAMILY UNIT MEMBERS 197
OTHER 117		FAMILY MEMBERS PAYING HALF DUES 101
TOTAL 142		